

Important: Retain these instructions

These instructions shall be used by trained service personnel only. If the equipment is used in a manner not specified by these instructions, the protection provided by the equipment may be impaired.

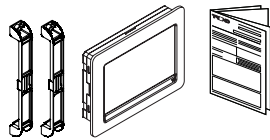
<https://partners.trendcontrols.com>



CONTENTS

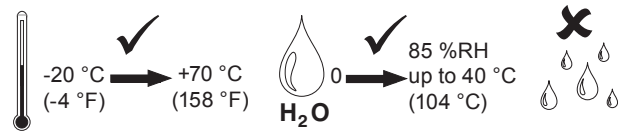
1	Box contents.....	1	3.4	Installation - Power up.....	8
2	Storing	1	3.5	Installation - Wiring	9
3	Installation	1	3.6	Installation - Connect Cables.....	10
3.1	Installation - Mounting.....	1	4	End User Licence Agreement.....	12
3.2	Installation - On a Wall.....	4	5	Cleaning and Maintenance	12
3.3	Installation - In a Dry Partition Wall	6	6	Disposal.....	12

1 BOX CONTENTS



IQView8 Installation Instructions (TG201232)

2 STORING (Altitude: <2000 m (6562'))



3 INSTALLATION

WARNING Do not attempt to open the unit. Failure to comply may cause damage to the unit.

It is recommended that the installation should comply with the local electrical safety installation practices (e.g. HSE Memorandum of Guidance on Electricity at Work Regulations 1989, USA National Electric Code).

Labels used on IQView8

	Service button
	Connector for Trend current loop network
	Connector for relay output
	Memory card slot

	USB A connector
	RJ11 (FCC68) connector for RS232 connection
	Ethernet connector
	Connector for 24 Vac/dc input power. ⊥ AC power line return

3.1 Installation - Mounting

1 Dimensions

IQView8 (with mounting brackets)

continued over page

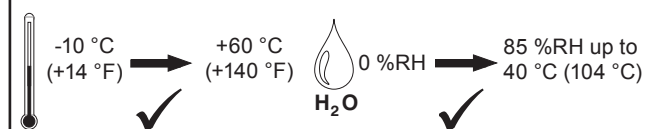
IQVIEW8 SURFACE MOUNTING BOX (Surface Mounting)

3.1 Installation- Mounting (continued)

1 Dimensions (continued)

IQVIEW8 DRY PARTITION WALL BOX (In Wall Mounting)

Operating Altitude: <2000 m (6562')



2 Mounting Requirements

Unit is UL rated as 'UL916 listed open energy management equipment'.

3 Remove Connectors

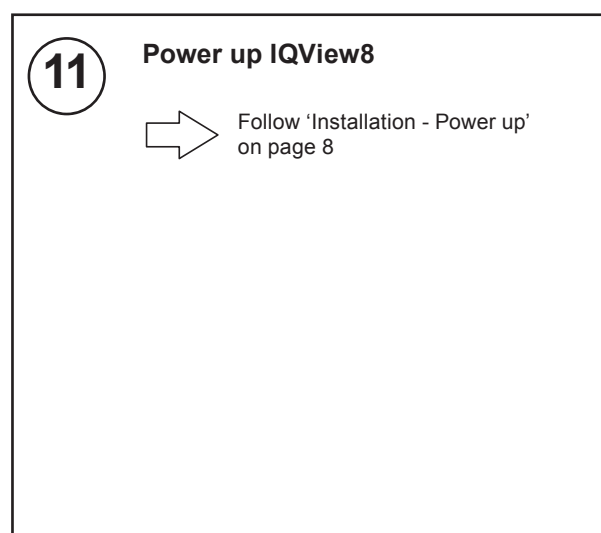
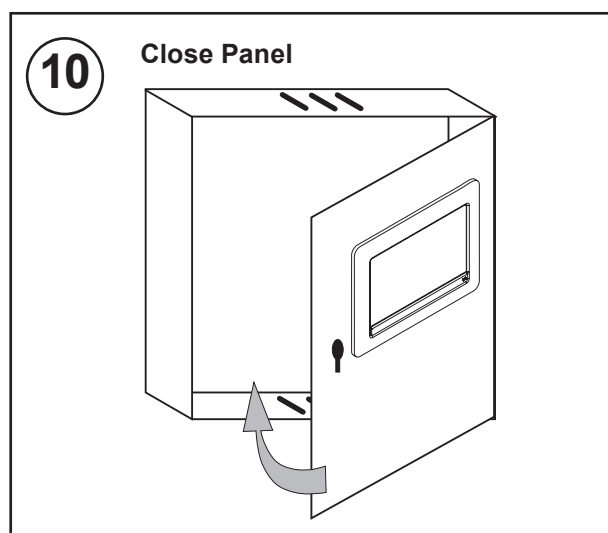
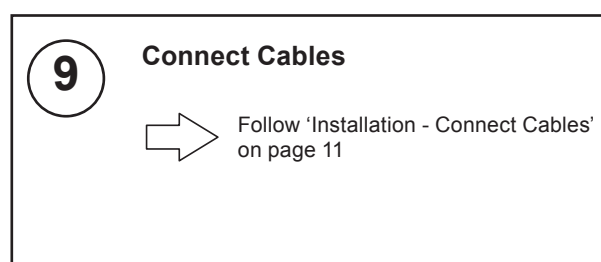
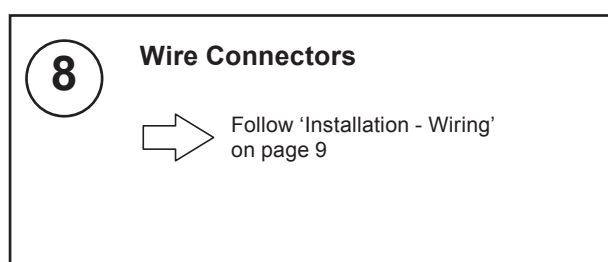
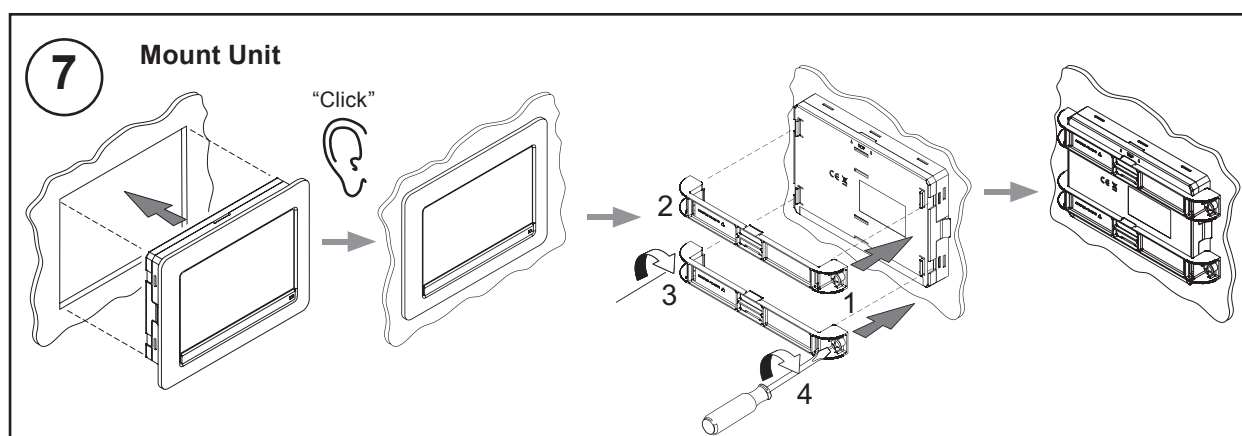
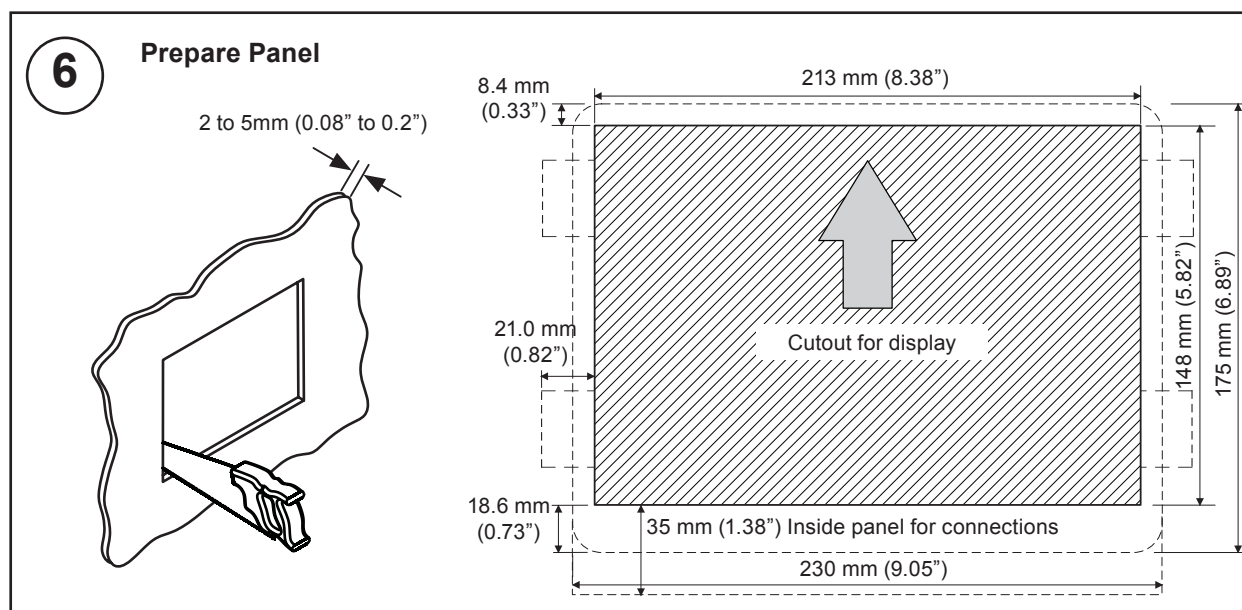
Important: Keep connectors

4 Check Gasket is in Position

5 Select Mounting Method

Panel Mounting	Surface Mounting	In Wall Mounting
Go to step 6 on page 3	Go to section 3.2 on page 4	Go to section 3.3 on page 6

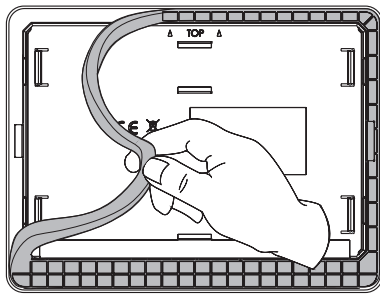
3.1 Installation- Mounting (continued)



3.2 Installation - On a Wall (Requires IQVIEW8 SURFACE MOUNTING BOX sold separately)

1

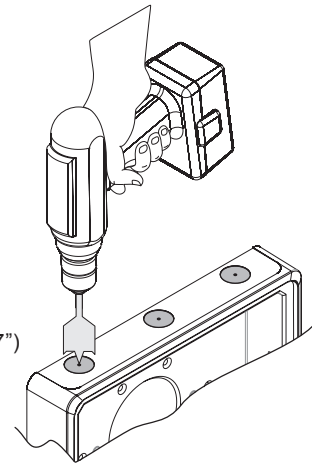
Remove Gasket



2

Remove Drill Outs (if required)

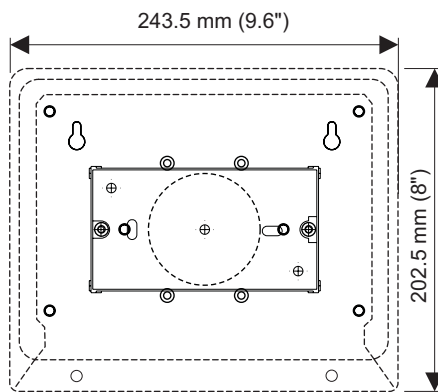
Ø = 22 mm (0.87")



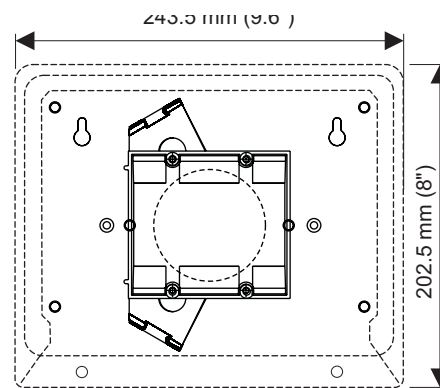
3

Fit UK or US Double Pattress Box (if required)

Either: UK Double Pattress Box



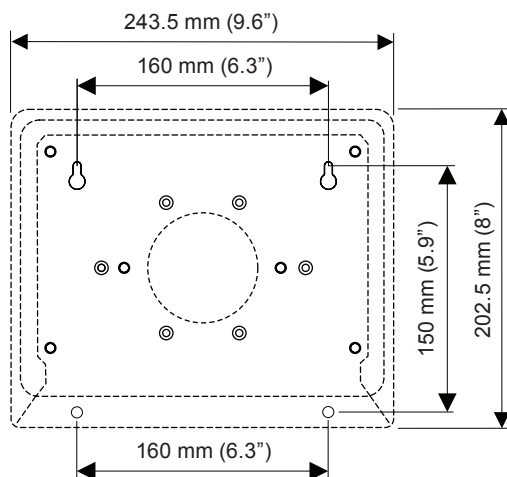
Or: US Double Pattress Box



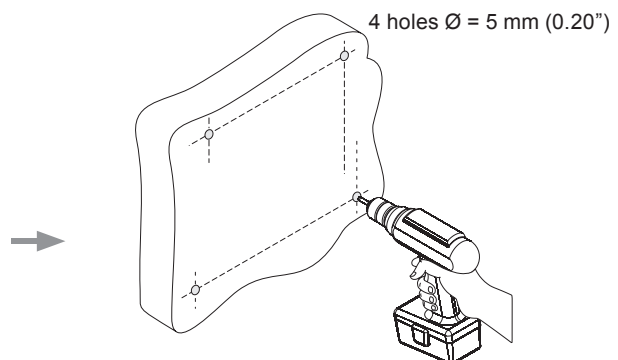
4

Prepare Mounting Holes (for flat surface, and UK/US double pattress mounting)

Mark hole positions



Drill holes and insert plugs



continued over page

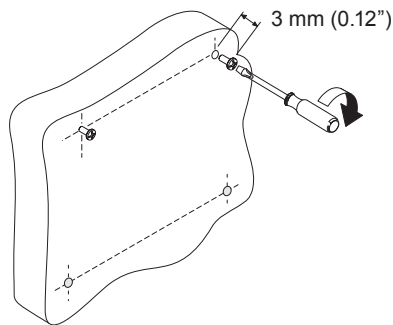


3.2 Installation - On a Wall (continued)

4

Prepare Mounting Holes (for flat surface, and UK/US double pattress mounting) (continued)

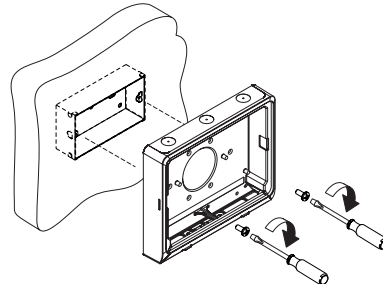
Insert top 2 screws



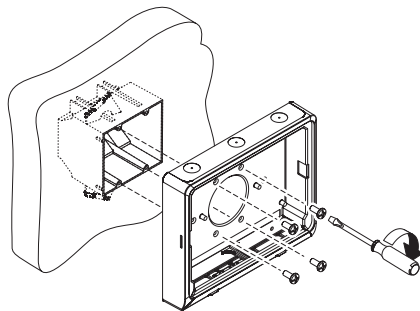
5

Mount Enclosure

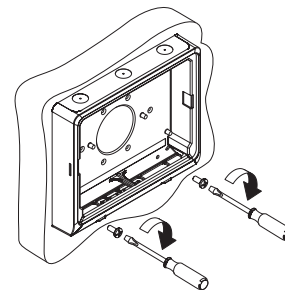
Either: UK Double Pattress Box



Or: US Double Pattress Box



Then: (for flat surface and UK/US double pattress box)

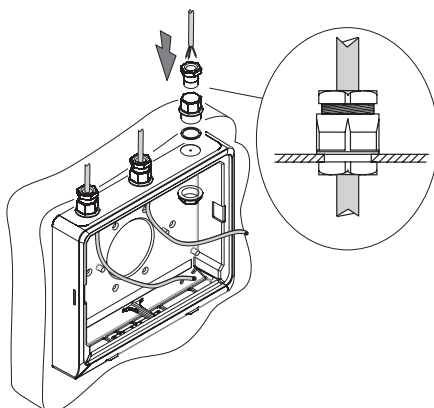


6

Route Cables

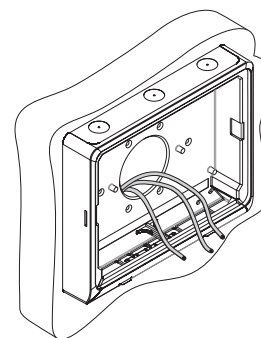
Either: Using Drill outs

If routing cables through the drill outs run the cables to into the enclosure using 20 mm gable glands (not supplied).



Or: into rear of enclosure

If routing cables from a pattress box run the cable to the pattress box as required, and then into the rear of the enclosure.



7

Wire Connectors



Follow 'Installation - Wiring' on page 9

8

Connect Cables

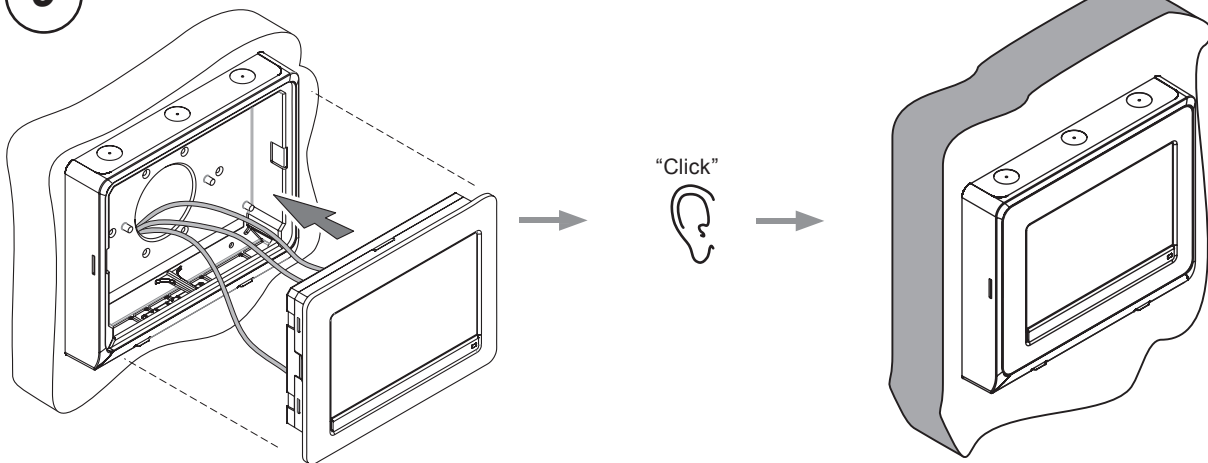


Follow 'Installation - Connect Cables' on page 11

3.2 Installation- On a Wall (continued)

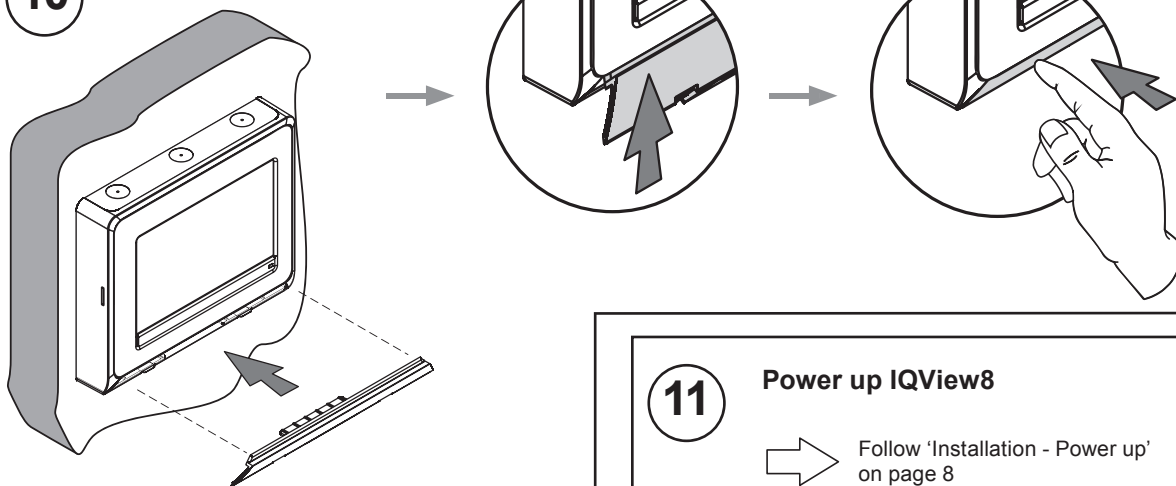
9

Mount IQView8 into Enclosure



10

Fit Access Lid



11

Power up IQView8

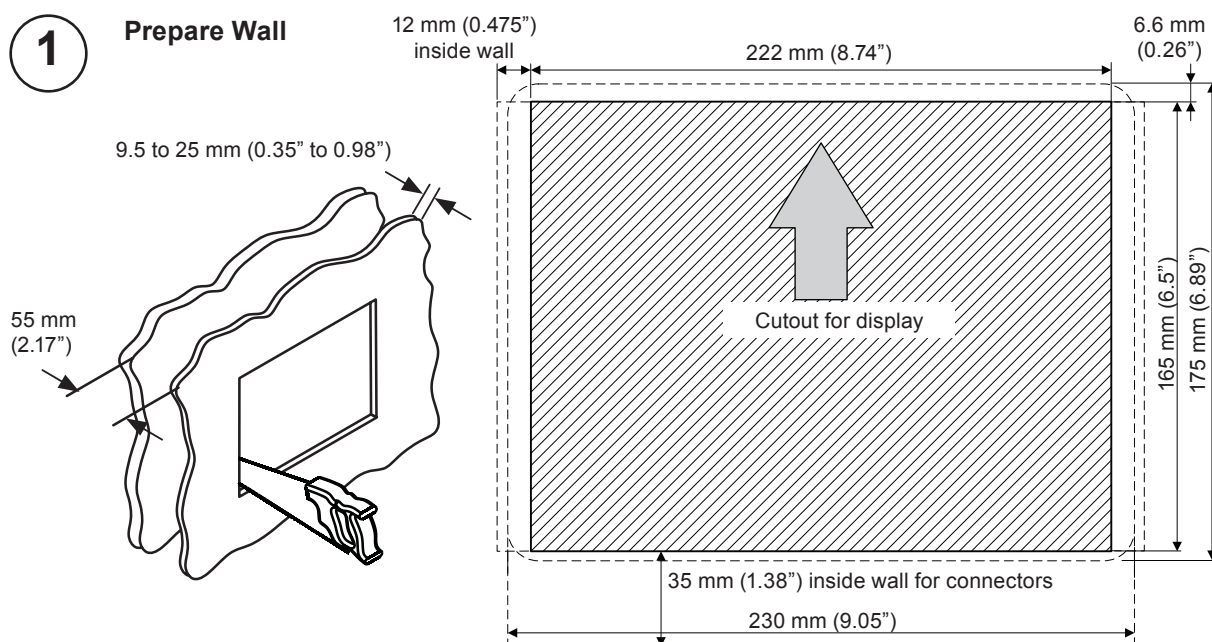


Follow 'Installation - Power up'
on page 8

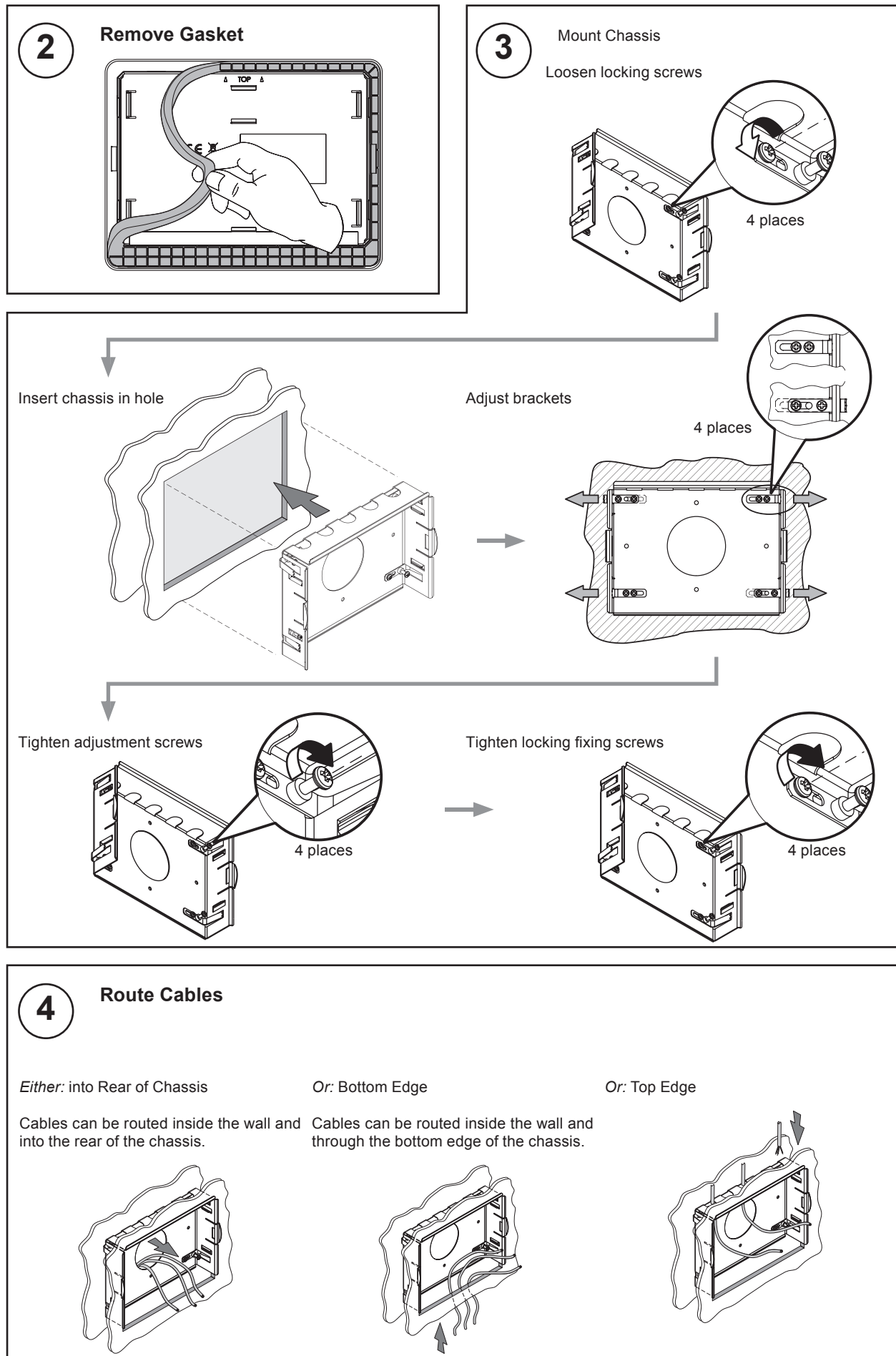
3.3 Installation - In a Dry Partition Wall (Requires IQVIEW8 DRY PARTITION WALL BOX sold separately)

1

Prepare Wall



3.3 Installation - In a Dry Partition Wall (continued)



4 Route Cables

Either: into Rear of Chassis

Cables can be routed inside the wall and into the rear of the chassis.



Or: Bottom Edge

Cables can be routed inside the wall and through the bottom edge of the chassis.



Or: Top Edge



3.3 Installation - In a Dry Partition Wall (continued)

5

Wire Connectors



Follow 'Installation - Wiring'
on page 9

6

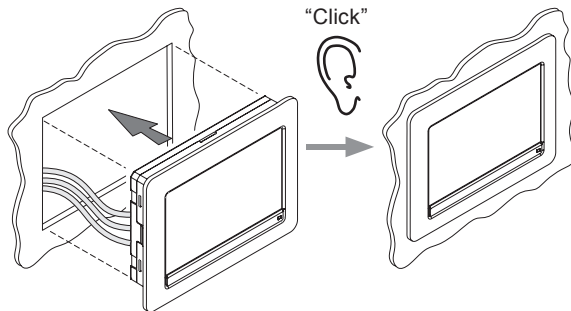
Connect Cables



Follow 'Installation - Connect Cables'
on page 11

7

Mount IQView8 into Chassis



8

Power up IQView8



Follow 'Installation - Power up'
on page 8

3.4 Installation - Power up

1

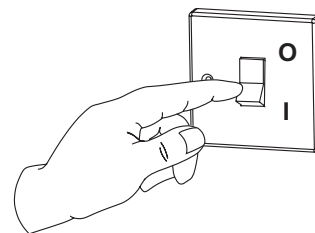
Read Licence



Read and agree to the end user
licence agreement, see section 4.

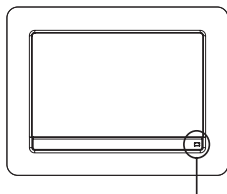
2

Switch On



3

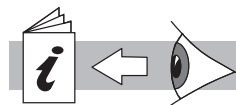
Check Indicators



	Normal Operation ✓	Fault ✗
Power	💡 Orange	💡 Check power supply

4

Configure

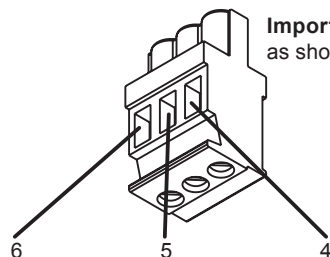


IQView8 Configuration Manual
(TE201233)

3.5 Installation - Wiring

1

Wire Relay Connector (if required for alarm notification)

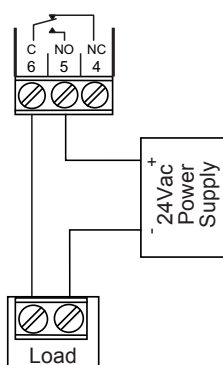


Important: Orientate connector as shown.

Terminal size 0.5 to 2.5 mm² (20 to 14 AWG)

Note: For UL rating CU only cable must be used.

On when Alarm present (Relay energised)



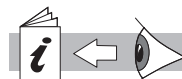
AC rating: 60 VA. e.g 30 Vac max @ 2 A, 24 Vac @2.5 A

DC rating: 60 W. e.g. 40 Vdc max @ 1.5 A, 24 Vdc @ 2.5 A

Do not connect 230V input power to this connector.

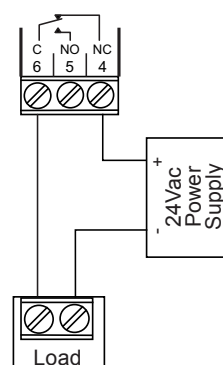


Arc suppression recommended.



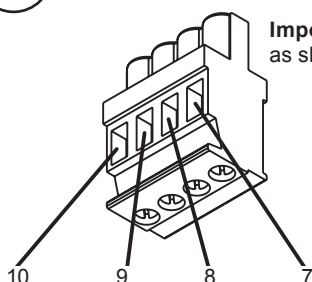
Relay Output Arc Suppression Installation Instructions (TG200208)

On when Alarm not present (Relay off)



2

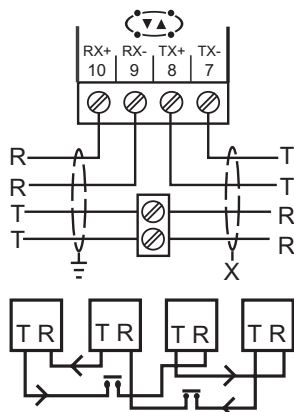
Wire Current Loop (if required for network connection)



Important: Orientate connector as shown.

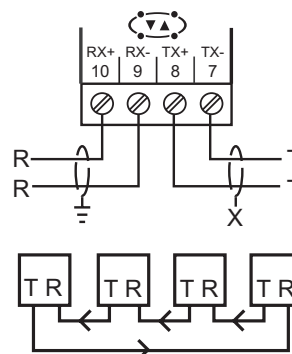
Polarity independent
Terminal size 0.5 to 2.5 mm² (20 to 14 AWG)

4 wire



Cable	1k2 baud	4k8 baud	9k6 baud	19k2 baud	No. of Wires
Belden 9182	1000 m (1090 yds)	1000 m (1090 yds)	1000 m (1090 yds)	700 m (765 yds)	2
Belden 9207	1000 m (1090 yds)	1000 m (1090 yds)	1000 m (1090 yds)	500 m (545 yds)	2
Trend TP/1/1/22/ HF/200 (Belden 8761)	1000 m (1090 yds)	1000 m (1090 yds)	700 m (765 yds)	350 m (380 yds)	2
Trend TP/2/2/22/ HF/200 (Belden 8723)	1000 m (1090 yds)	1000 m (1090 yds)	500 m (545 yds)	250 m (270 yds)	4

2 wire



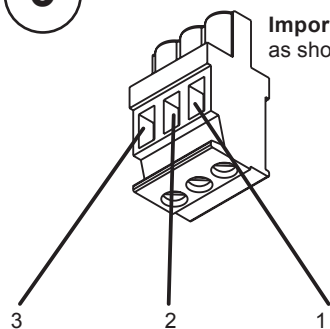
3.5 Installation - Wiring (continued)

3

Wire Power Connector



Important: Orientate connector as shown.

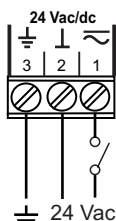


Terminal size 0.5 to 2.5 mm² (20 to 14 AWG)

Note: For UL rating the input power connections must be made using 18 AWG or larger wire rated at least 90°C.

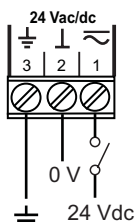
General Connections

24 Vac

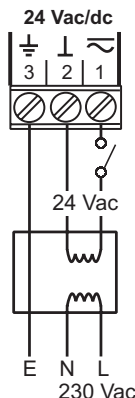


For USA/Canada use a UL Listed, Class 2, 24 Vac transformer

24 Vdc

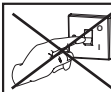


230 Vac/24Vac transformer with isolated output (e.g. ACC/24VAC)



For USA/Canada use a UL Listed, Class 2, 24 Vac transformer

24 Vac $\pm 15\%$ 50/60 Hz at 20 VA minimum or 24 Vdc 440 mA, 10.5 W. For dc a dc supply with a minimum output of 600 mA is recommended.



DO NOT SWITCH ON POWER

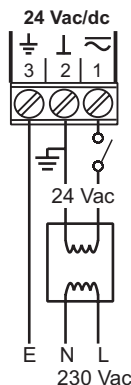
Do not connect 230V input power to this connector.

WARNING: This apparatus must be earthed (grounded) via input supply earth (ground) terminal. The earth (ground) on this unit is NOT a protective earth (ground), but it is essential that an earth is fitted for functional reasons.

Input power supply: The 24V supply must include a suitably rated switch in close proximity and be clearly marked as the disconnecting device for the unit. Do not position the equipment so that the disconnecting device is difficult to operate.

Note: The required power cannot be provided by a controller's auxiliary supply output; a separate supply is required.

230 Vac/24 Vac transformer with one side earthed (grounded)



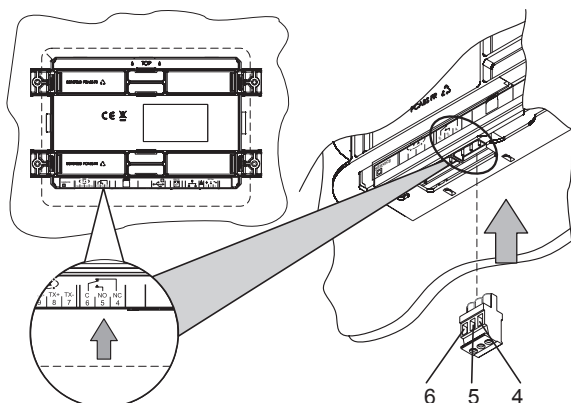
For USA/Canada use a UL Listed, Class 2, 24 Vac transformer

Some transformers are earthed (grounded) on one side of the secondary. If so ensure the earthed (grounded) side is connected to the central terminal of the power connector. If the polarity of the connection is incorrect the unit will not power up. If this happens swap the connections to the right (\sim) and central (\perp) terminals.

3.6 Installation - Connect Cables

1

Connect Relay Output (if required for alarm notification)

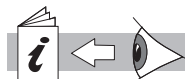


Terminal size 0.5 to 2.5 mm² (20 to 14 AWG)

Do not connect 230V input power to this connector.



Arc suppression recommended.



Relay Output Arc Suppression Installation Instructions (TG200208)

3.6 Installation - Connect Cables (continued)

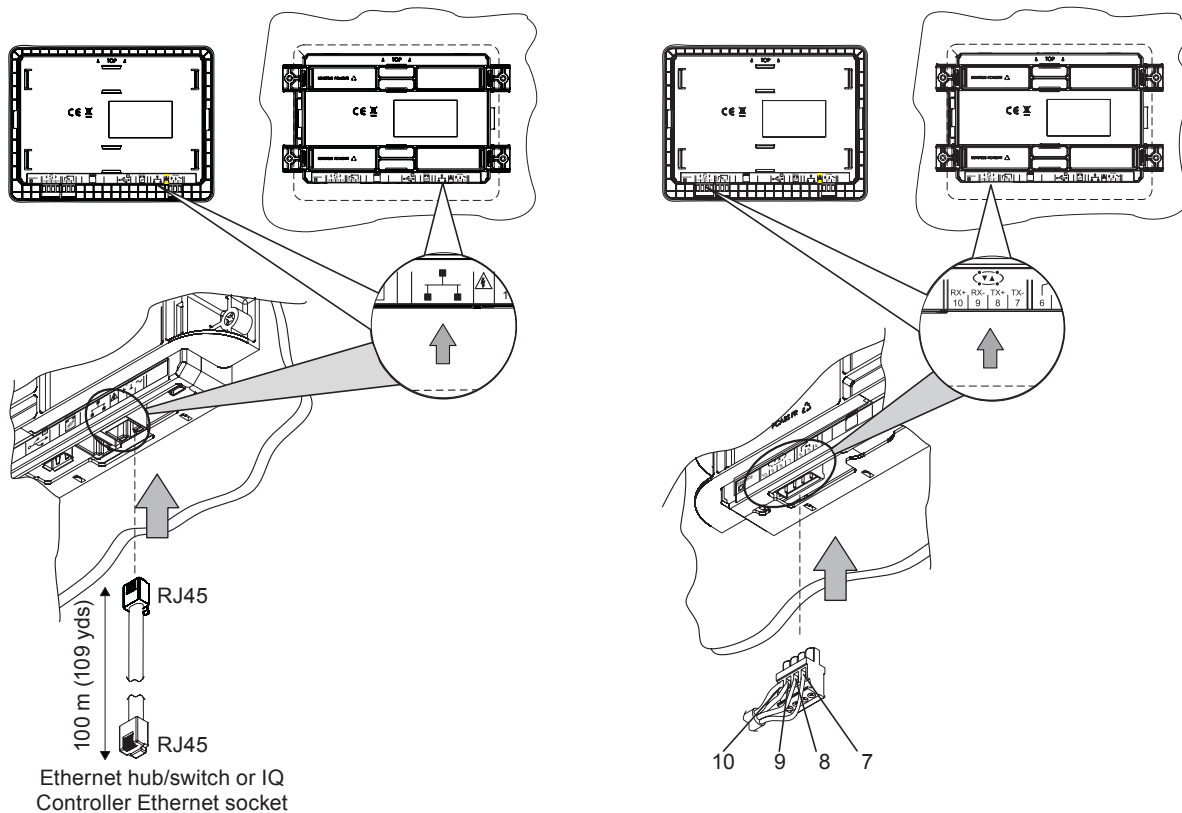
2

Connect Network Cable

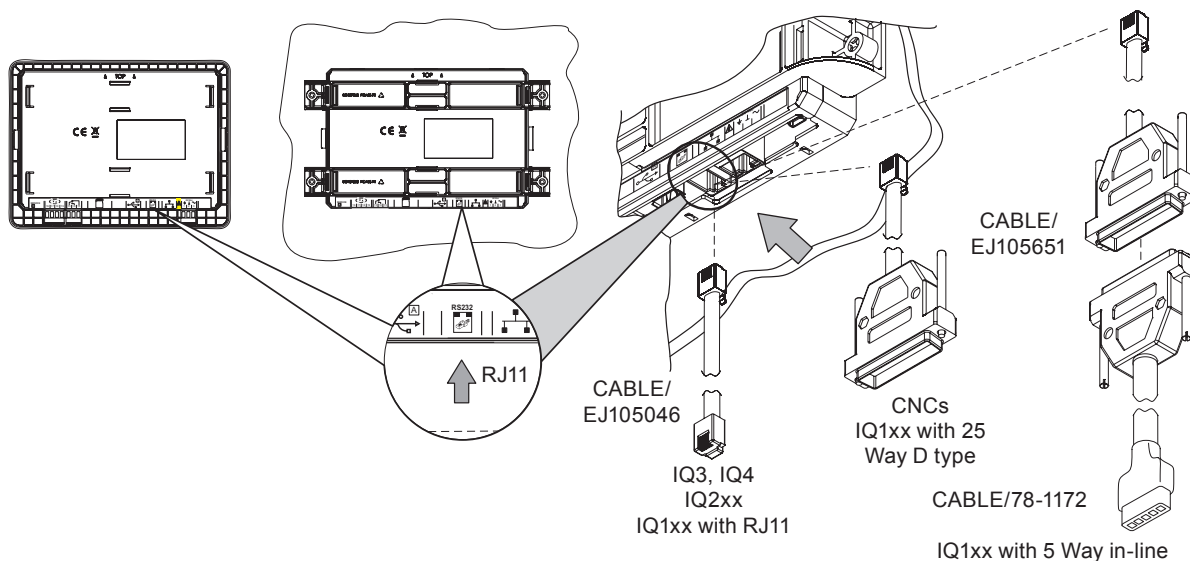
Either: Ethernet

Or: Current Loop

Note: When connected to an IQ controller's Ethernet socket the controller's vCNC must be set up.



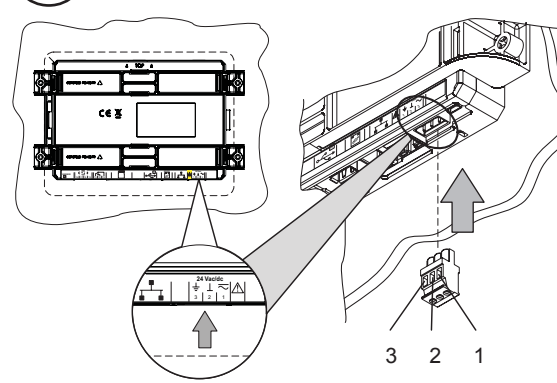
Or: RS232



Connecting to	Cable Required
IQ4, IQ3, IQ2xx, or IQ1xx with RJ11 connector	RJ11 to RJ11 cable with a twist (CABLE/EJ105046).
CNCs, or IQ1xx with 25 Way D type connector	RJ11 to 25 way D type cable (CABLE/EJ105651).
IQ1xx with 5 way in-line connector	RJ11 to 25 Way D type cable (CABLE/EJ105651) and 25 way D type socket to 5 in-line adapter cable (CABLE/78-1172).

3.6 Installation - Connect Cables (continued)

3 Connect Power Cable



DO NOT TURN ON POWER

Do not connect 230V input power to this connector.

WARNING: This apparatus must be earthed (grounded) via input supply earth (ground) terminal. The earth (ground) on this unit is NOT a protective earth (ground), but it is essential that an earth is fitted for functional reasons.

Input power supply: The 24V supply must include a suitably rated switch in close proximity and be clearly marked as the disconnecting device for the unit.

4 END USER LICENCE AGREEMENT

You have acquired an IQView8 ("Device") that includes software licensed by Trend Control Systems Ltd from one or more software licensors ("Trend Control Systems Ltd Software Suppliers"). Such software products, as well as associated media printed materials and "online" or electronic documentation ("SOFTWARE") are protected by international intellectual property laws and treaties. The SOFTWARE is licensed, not sold. All rights reserved.

IF YOU DO NOT AGREE TO THIS END USER LICENSE AGREEMENT ("EULA"), DO NOT USE THE DEVICE OR COPY THE SOFTWARE. INSTEAD, PROMPTLY CONTACT Trend Control Systems Ltd FOR INSTRUCTIONS ON RETURN OF THE UNUSED DEVICE(S) FOR A REFUND. ANY USE OF THE SOFTWARE INCLUDING BUT NOT LIMITED TO USE ON THE DEVICE will constitute your agreement to the EULA (or Ratification of any previous consent).


GRANT OF SOFTWARE LICENSE. This EULA grants you the following license:

- You may use the SOFTWARE only on the DEVICE
- NOT FAULT TOLERANT. THE SOFTWARE IS NOT FAULT TOLERANT. Trend Control Systems Ltd HAS INDEPENDENTLY DETERMINED HOW TO USE THE SOFTWARE IN THE DEVICE, AND Trend Control Systems Ltd's software suppliers HAS RELIED UPON Trend Control Systems Ltd TO CONDUCT SUFFICIENT TESTING TO DETERMINE THAT THE SOFTWARE IS SUITABLE FOR SUCH USE.
- NO WARRANTIES FOR THE SOFTWARE. THE SOFTWARE is provided "AS IS" and with all faults. THE ENTIRE RISK AS TO SATISFACTORY QUALITY, PERFORMANCE, ACCURACY, AND EFFORT (INCLUDING LACK OF NEGLIGENCE) IS WITH YOU. ALSO, THERE IS NO WARRANTY AGAINST INTERFERENCE WITH YOUR ENJOYMENT OF THE SOFTWARE OR AGAINST INFRINGEMENT. IF YOU HAVE RECEIVED ANY WARRANTIES REGARDING THE DEVICE OR THE SOFTWARE, THOSE WARRANTIES DO NOT ORIGINATE FROM, AND ARE NOT BINDING ON, Trend Control Systems Ltd's software suppliers.
- No Liability for Certain Damages. EXCEPT AS PROHIBITED BY LAW, Trend Control Systems Ltd's software suppliers SHALL HAVE NO LIABILITY FOR ANY INDIRECT, SPECIAL, CONSEQUENTIAL OR INCIDENTAL DAMAGES ARISING FROM OR IN CONNECTION WITH THE USE OR PERFORMANCE OF THE SOFTWARE. THIS LIMITATION SHALL APPLY EVEN IF ANY REMEDY FAILS OF ITS ESSENTIAL PURPOSE. IN NO EVENT SHALL Trend Control Systems Ltd's software suppliers BE LIABLE FOR ANY AMOUNT IN EXCESS OF U.S. TWO HUNDRED FIFTY DOLLARS (U.S.\$250.00).
- Limitations on Reverse Engineering, Decompilation, and Disassembly. You may not reverse engineer, decompile, or disassemble the SOFTWARE, except and only to the extent that such activity is expressly permitted by applicable law notwithstanding this limitation.
- SOFTWARE TRANSFER ALLOWED BUT WITH RESTRICTIONS. You may permanently transfer rights under this EULA only as part of a permanent sale or transfer of the Device, and only if the recipient agrees to this EULA. If the SOFTWARE is an upgrade, any transfer must also include all prior versions of the SOFTWARE.

5 CLEANING AND MAINTENANCE

There are no serviceable parts inside the unit. Cleaning of the unit should be carried out in order to avoid buildup of dust or other contaminants. **Disconnect power before carrying out any cleaning.** Clean surfaces with a cloth moistened with water.

6 DISPOSAL

WEEE Directive:
 At the end of their life the packaging, and product should be disposed of by a suitable recycling centre. Do not dispose of with normal household waste. Do not burn.

Please send any comments about this or any other Trend technical publication to techpubs@trendcontrols.com

© 2016 Honeywell Technologies Sàrl, ECC Division. All rights reserved. Manufactured for and on behalf of the Environmental and Combustion Controls Division of Honeywell Technologies Sàrl, Z.A. La Pièce, 16, 1180 Rolle, Switzerland by its Authorized Representative, Trend Control Systems Limited.

Trend Control Systems Limited reserves the right to revise this publication from time to time and make changes to the content hereof without obligation to notify any person of such revisions or changes.

Trend Control Systems Limited

Albery House, Springfield Road, Horsham, West Sussex, RH12 2PQ, UK. Tel:+44 (0)1403 211888 Fax:+44 (0)1403 241608 www.trendcontrols.com



EAC

TR CU Certification